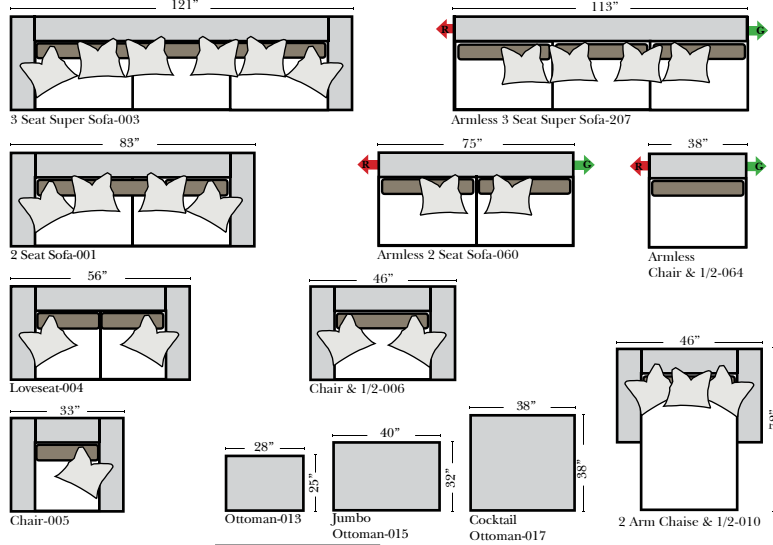


### Standard & Armless - Ottomans

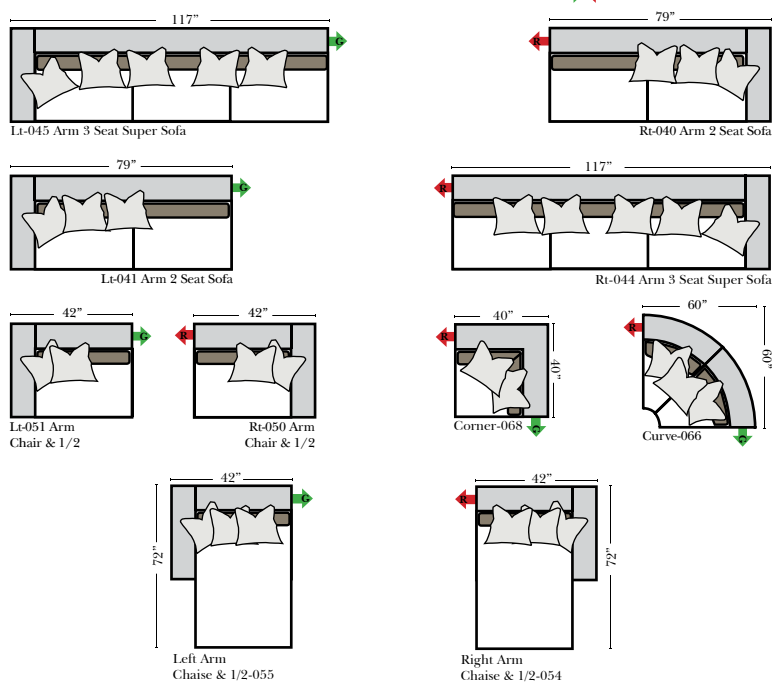
Put Green Arrows with Red Arrows to Create Sectional Groups → ←



All Ottomans are 19" high

### L-Shape / 90 Degree Sectional

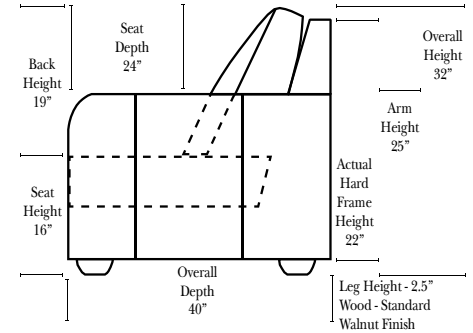
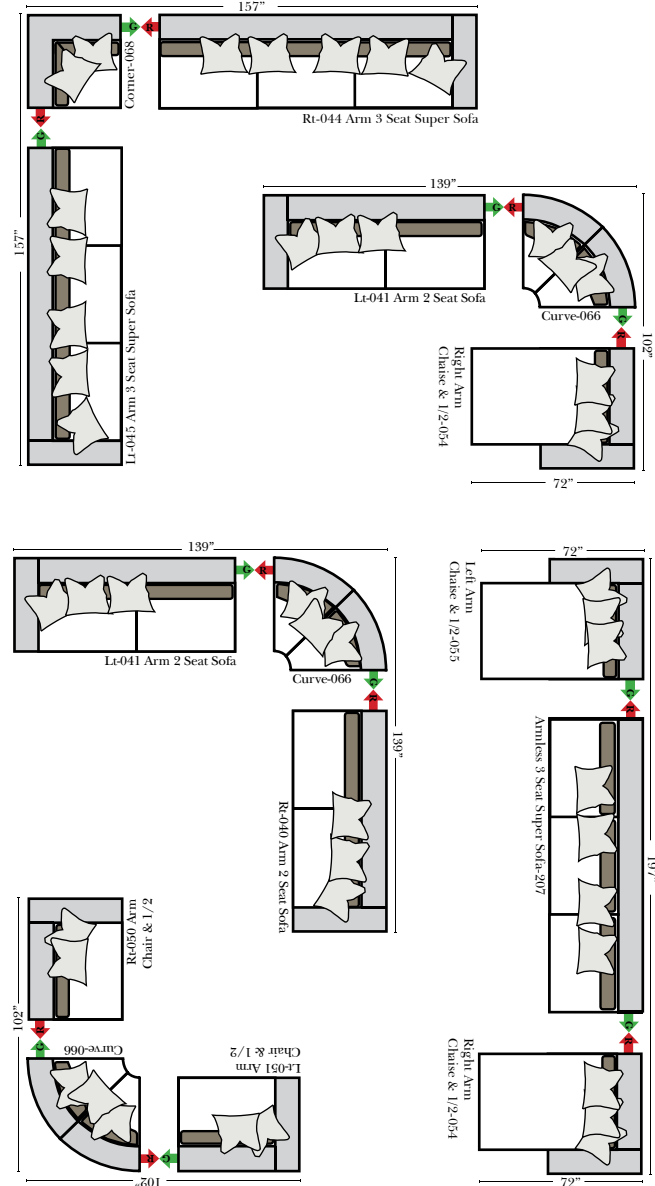
Put Green Arrows with Red Arrows to Create Sectional Groups → ←



### Suggested Configurations

Put Green Arrows with Red Arrows → ← to mix with some of the L-Shaped pieces.

The Suggested Configurations below are only a sample of what the imagination can create, please enjoy creating the configuration that fits your lifestyle, using the ideas below and from the items on the opposite page.



### Specifications & Options

#### Standard:

- Available in Full & Top Grain Leathers
- All Hardwood Frames
- Welt
- Throw Pillow(s)
- Leg Color - Walnut

#### Options Available with No Additional Charge:

- Change Leg Color to: Cherry, Chocolate, Espresso, Honey Oak, & Shadow
- No. 33 Firm Foam

#### Options that have Additional Charges:

- Add Down Seats & Backs

#### Sleeper Options : N/A on this style



#### Note:

All Dimensions are approximate, if accuracy is crucial, please contact us for validation of the dimensions shown. However, a 1" to 2" variance can still apply due to foam and upholstery.